

CCS Technical Documentation

NHL-2NA Series Transceivers

Product Variants

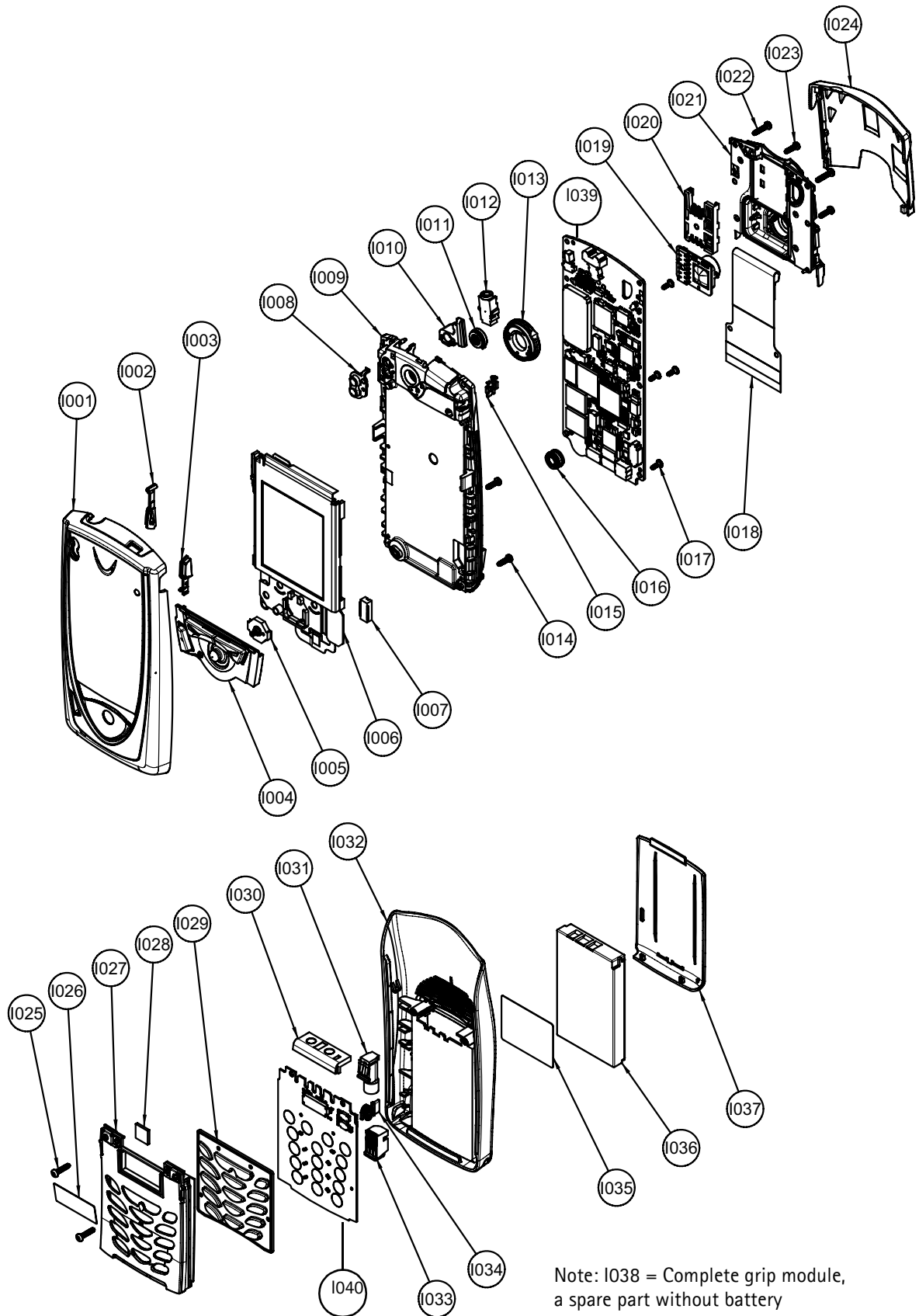
[This page left intentionally blank]

Table of Contents

	Page No
Exploded Diagram of NHL-2NA	4
List of Mechanic Parts	5

Exploded Diagram of NHL-2NA

Figure 1: Exploded diagram of NHL-2NA



Note: 1038 = Complete grip module, a spare part without battery

List of Mechanic Parts

Item	Code	Qty	Part name	Part type
I001	9458224	1	A-cover Assembly	DMC04037
I002	9790529	1	Voice Record Key	DMC04034
I003	9790530	1	Power Key	DMC04035
I004	9790535	1	Transceiver Keymat Assy	DMC04038
I005	5200047	1	Sm Sw 5way Navigation Key	
I006	4850243	1	UI Module Assy	HDB15
I007	5469169	1	Sm Conn 2x15f P0.5	50V 0.3A BTB
I008	9458256	1	Proximity Windows	DMC04040
I009	9467067	1	Chassis main assy	DMC04028
I010	9460416	1	Proximity Rubber	DMD07587
I011	5140247	1	Speaker 105+-3db	32R D8X2MM PICO
I012	5409119	1	Sm Jack 2.5mm 5pol+sw	SPR 90DEG
I013	5140255	1	Speaker 78+-2db	8R D16.2X3.8
I014	6290119	2	Screw 1.8x6 Rf T6+ Blk	DMD06930
I015	5200049	1	Sm Sw Dome	42VDC 100MA
I016	5140261	1	Cond.mic 40+-2db	2.2K D7.5X4.1
I017	6290117	4	Screw 1.6x4.4 Rff T5+ Bl	DMD06931
I018	0201759	1	L4 Grip flex	FLEX MODULE
I019	4858001	1	Vga Camera Module	TCM8002MD
I020	5409215	1	Sm Sim Conn 2x3pol	P2.54 SPR
I021	9467064	1	Acoustic Chamber Assy	DMC04047
I022	6290093	2	Screw 1.8x8 Fezn T6+	DMD05615 BLK
I023	6290119	2	Screw 1.8x6 Rf T6+ Blk	DMD06930
I024	9458205	1	B-cover Painted	DMC04077
I025	6290093	2	Screw 1.8x8 Fezn T6+	DMD05615 BLK
I026	9480728	1	Protection Tape	DMD07339
I027	9458182	1	Keymat Cover Assy	DMC03986
I028	6490201	1	Magnet	DMD07320
I029	9794057	1	Grip Keymat Assy	DMC03866
I030	5400255	1	Battery Connector	
I031	6800027	1	Vib Motor Assy 1.3v	120MA 6000RPM

Item	Code	Qty	Part name	Part type
I032	9458181	1	Grip Cover Assy	DMC03987
I033	5400251	1	Dc Jack	
I034	9452255	1	Locking Latch	DMD08345
I035	9370931	1	Type Label Reel Code	DMD07217
I036	0670246		Battery Li-Ion	BLB-2
I037	9452059	1	Battery Cover	DMD07485
I038	0257003	1	LS4 Grip module	ITU-T
I039		1	LG4 PWB	
I040		1	LS4 PWB	